

# UPDATES IN CLINICAL NEUROIMMUNOLOGY INAUGURAL CONFERENCE

## Saturday, November 21, 2015

Course Director: Chafic Karam, MD

Location: The William and Ida Friday Center  
100 Friday Center Drive, Chapel Hill, NC 27599

Date: Saturday, November 21, 2015  
Registration: 7:30 am - 7:55 am  
Program: 7:55 am - 4:30 pm

Early Registration Fees through November 14th:

MD/DO:	\$189.00
NP/PA:	\$89.00
Allied Health and Non-Healthcare:	\$89.00
Residents/Medical Students:	Fee Waived

In the last decade, there have been major advances in the field of neuroimmunology. Physicians are suspecting immune mediated disorders more frequently and new algorithms for management of these treatable conditions are being formulated. Diagnosis is becoming easier with the discovery of antibodies that correspond to specific syndromes. Given the rapid advances in neuroimmunology, Updates in Clinical Neuroimmunology brings together world renowned experts eager share the latest information, advances, and best practices geared to assist the general neurologist and other providers on how to recognize, diagnose and manage immune mediated neurological disorders.

This day long educational event will explore:

- Autoimmune and paraneoplastic encephalitis
- Neurological complications in patients with rheumatological disorders
- Treatment and management of multiple sclerosis and optic neuritis
- Diagnosis and management of patients with infection diseases of the central nervous system
- Management of neuromuscular junction disorders
- Methods to approach inflammatory disorders of the spinal cord
- When to suspect and recognize immune mediated neuropathies and myopathies

### AUDIENCE

Neurologists, Physician, Assistants, Nurse Practitioners, Resident Physicians, and those who care for patients with suspected or diagnosed neurological conditions.

### OBJECTIVES

Upon completion of this educational activity, the participant will be able to:

- Detect an immune-mediated neurological disorder, discuss the utility of antibodies in neuroimmunology, and list appropriate medications used
- Recognize presentation of immune-mediated encephalitis, discuss illustrative cases including necessary investigations and describe approaches to treatment
- Discuss the neurological complications of rheumatological disorders, using illustrative cases, describe necessary investigations and approaches to treatment
- Identify neurotropic pathogens, describe clinical presentations of patients with infection of the CNS, review approaches to treatment
- Differentiate multiple sclerosis and optic neuritis from other neurological disorders, discuss differential diagnosis of white matter change, describe work-up of patients with MD and Optic Neuritis, review illustrative cases and approaches to treatment
- Discuss differential diagnosis and work-up in patients with myelitis, review illustrative cases and describe approaches to treatment
- Recognize various types inflammatory myopathies, evaluate inflammation on muscle biopsy with regards to inflammatory myopathy, and describe work-up of a patient with inflammatory myopathy
- Discuss when to suspect an inflammatory neuropathy, explain isolated inflammatory neuropathies versus those associated with systemic disease, review illustrative case and approaches to treatment
- Recognize when to suspect an NMJ disorder, review disorders affecting the NMJ, discuss work-up and treatment of NMJ disorders
- Describe clinical presentations of patients with CNS Vasculitis, discuss illustrative cases including necessary investigations and describe approaches to treatment

Jointly provided by:



UNC  
DEPARTMENT  
OF NEUROLOGY



## FACULTY

**Chafic Karam, MD**, is an assistant of clinical neurology and neuromuscular medicine at the University of North Carolina Hospitals. He earned his medical degree from the Saint Joseph University in Beirut and his neurological training at Beth Israel Medical Center, Albert Einstein Medical College in New York, NY. He then completed a Neuromuscular Medicine fellowship at the Partners program, Harvard Medical School (Brigham and Women's Hospital, Massachusetts General Hospital and Boston's Children Hospital) in Boston MA, and a Peripheral Nerve fellowship at the Mayo Clinic in Rochester, MN. Dr. Karam's clinical interest is in patients with peripheral neuropathies and motor neuron disease (ALS). Dr. Karam has expertise in performing and interpreting nerve conduction studies and electromyography, muscle, skin and nerve biopsies, autonomic system testing and quantitative sensory testing. Dr. Karam is involved in various research projects in peripheral neuropathy and ALS disease. He is a reviewer for major neurology and neuromuscular journals and is currently on the editorial board of Neurology.

**Eric Lancaster, MD, PhD**, graduated from Johns Hopkins University in 1994 with a BS in biomedical and electrical engineering. After one year of brain imaging research, he enrolled in the MD-PhD program at the University of Maryland. His thesis was on the effects of nerve injury on the ion channels and electrical excitability of sensory neurons. Dr. Lancaster completed medical internship, neurology residency, and a neuromuscular clinical fellowship at the University of Pennsylvania (2003-2008), and is board-certified in neurology, neuromuscular medicine, and electrodiagnostic medicine. Since 2008, he has devoted most of his time to research on the neurobiology of disease, seeing patients with neuromuscular disorders in the remaining time.

**Tracey A. Cho, MD, MA**, received his medical degree from Yale School of Medicine. He completed an internship in internal medicine at MGH and residency in neurology at the Partners-Harvard Neurology Residency (MGH and Brigham and Women's Hospital). He trained in general neurology with a focus on neurology-infectious diseases and neuro-rheumatology during a clinical fellowship at MGH. He is now the Associate Director of the Neurology-Infectious Diseases Program of MGH Neurology and focuses clinically on meningitis, encephalitis, and myelitis due to infections such as HIV and cysticercosis, as well as systemic medical diseases like sarcoidosis and lupus. He also specializes in autoimmune neurological disorders such as NMDA receptor antibody encephalitis and other antibody mediated encephalitis. Dr. Cho is a co-investigator on clinical studies involving neurological complications of HIV and neurocysticercosis.

**Stacey L. Clardy, MD, PhD**, is both clinical and research faculty in the Division of Neuroimmunology within the Department of Neurology. Prior to joining the University of Utah team Dr. Clardy furthered her training with a fellowship in Autoimmune Neurology at the Mayo Clinic. Her training and experience focus on the evaluation and management of autoimmune and paraneoplastic disorders of the nervous system. The spectrum of autoimmune and paraneoplastic neurological disorders intersects all traditional neurology subspecialties, including movement disorders, epilepsy, behavioral/cognitive, neuromuscular, autonomic, demyelinating, and neurooncologic.

### **Silva Markovic-Plese, PhD**

Associate Professor of Neurology, UNC SOM Department of Neurology

### **Anne M. Reed, MD**

Chair, Department of Pediatrics, Duke University School of Medicine

### **James F. Howard, Jr., MD**

Distinguished Professor Of Neuromuscular Disease  
Professor of Neurology, Medicine & Allied Health  
Chief, Neuromuscular Disorders Section, Department of Neurology  
The University of North Carolina at Chapel Hill

**Colin Quinn, MD, MSPT**, received his medical degree from the University of Virginia School of Medicine and completed an internship and residency training in neurology at the University of Pennsylvania. Subsequently, he completed fellowship training in neuromuscular neurology at Brigham and Women's/Massachusetts General Hospital

in Boston. After fellowship he was a clinical instructor and research fellow at the University of Massachusetts where he worked to design and perform clinical trials for patients with amyotrophic lateral sclerosis (ALS). Dr. Quinn's clinical interests include neuromuscular neurology with a particular focus in ALS and muscle diseases. Dr. Quinn sees patients both at the University of Pennsylvania and the Philadelphia VA Medical Center.

### **Heather Van Mater, MD, MS**

Assistant Professor of Pediatrics, Duke University School of Medicine

## AGENDA

7:30 - 7:55 AM	Registration, Check-in, Breakfast and Exhibits
7:55 - 8:00 AM	Welcome and Introduction <i>Chafic Karam, MD</i>
8:00 - 8:30 AM	General Principle of Neuroimmunology <i>Chafic Karam, MD</i>
8:30 - 9:15 AM	Infectious Diseases of the CNS <i>Tracey Cho, MD</i>
9:15 - 9:45 AM	Myelitis <i>Stacey L. Clardy, MD, PhD</i>
9:45 - 10:00 AM	Question and Answer
10:00 - 10:15 AM	Exhibits and Break
10:15 - 10:45 AM	Immune-mediated Encephalitis <i>Eric Lancaster, MD, PhD</i>
10:45 - 11:15 AM	Immunomodulatory Therapies for Relapsing Remitting Multiple Sclerosis <i>Silva Markovic-Plese, MD, PhD</i>
11:15 - 11:45 AM	Neuro-rheumatology <i>Tracey Cho, MD</i>
11:45 - 12:15 PM	CNS Vasculitits <i>Heather A. Van Mater, MD, MS</i>
12:15 - 12:30 PM	Question and Answer
12:30 - 1:30 PM	Lunch and Exhibits
1:30 - 2:00 PM	Inflammatory Myopathies <i>Ann M. Reed, MD</i>
2:00 - 2:30 PM	Immune-mediated Peripheral Neuropathies <i>Chafic Karam, MD</i>
2:30 - 3:00 PM	Immune-mediated Disorders of Neuromuscular Transmission <i>James F. Howard, Jr., MD</i>
3:00 - 3:15 PM	Exhibits and Break
3:15 - 4:15 PM	Case Presentations and Discussion <i>Colin Quinn, MD, MSPT and Chafic Karam, MD</i>
4:15 - 4:30 PM	Question and Answer; Closing Remarks and Adjourn

## CASE STUDY SUBMISSION GUIDELINES

Registered course participants are invited to submit a case study for review, presentation and discussion by Course Faculty. Cases submitted are intended to enhance the educational experience and not meant for private consultation.

- \*Case narrative should be no longer than 1 page in length
- \*Patient personal identifiers should be omitted
- \*Submission deadline is November 9, 2015
- \*Every case submitted may not be subject to panel discussion

Submit a Case Study via SurveyMonkey to UNC Department of Neurology for possible presentation and discussion at Updates in Clinical Neuroimmunology on November 21, 2015.

<https://www.surveymonkey.com/r/UNCNeuro>

## CREDIT

### Continuing Medical Education

#### Accreditation:

This activity has been planned and implemented in accordance with the accreditation requirements and policies of the North Carolina Medical Society (NCMS) through the joint providership of the Mountain Area Health Education Center and UNC Department of Neurology. The Mountain Area Health Education Center is accredited by the NCMS to provide continuing medical education for physicians.

#### Credit Designation:

The Mountain Area Health Education Center designates this live educational activity for a maximum of **7.0 AMA PRA Category 1 Credits™**. Physicians should only claim credit commensurate with the extent of their participation in the activity.

#### Disclosure:

The Mountain Area Health Education Center adheres to ACCME Essential Areas, Standards, and Policies regarding industry support of continuing medical education. Disclosure of the planning committee and faculty's commercial relationships will be made known at the activity.

MAHEC designates this continuing education activity as meeting the criteria for **0.7 CEUs** as established by the National Task Force on the Continuing Education Unit.

## REGISTRATION

The early registration fee through November 14th is \$189.00 for MD/DOs, \$89.00 for NP/PAs, and \$89.00 for Allied Health and Non-Healthcare. Registration fee includes administrative costs, educational materials, and lunch.

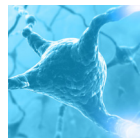
MAHEC has a pay-up-front policy for all CE programs. The only exceptions will be for pre-approved programs where an individual payment plan is appropriate. Registrations received without accompanying payment will not be processed and participants who have not paid the course fee will not be admitted into the program.

Cancellations received at least two weeks in advance of the program date will receive a full refund unless otherwise noted. Cancellations received between two weeks and up to 48 hours prior to the program date will receive a 70% refund unless otherwise noted. No refunds will be given for cancellations received less than 48 hours prior to the program date. All cancellations must be made in writing (fax, mail, or email). Substitutes can be accommodated in advance of the program.

## DIRECTIONS

The Friday Center is located at 100 Friday Center Drive, Chapel Hill, NC 27517, approximately three miles east of the UNC-Chapel Hill campus, just off Highway 54 East (Raleigh Road). The Center is a short distance from Interstate 40 (from Raleigh, I-40 exit 273A; from Greensboro, I-40 exit 273).

For detailed driving directions please visit the Friday Center's website: <http://fridaycenter.unc.edu/directions/>



# UPDATES IN CLINICAL NEUROIMMUNOLOGY INAUGURAL CONFERENCE

Updated contact info

Name \_\_\_\_\_

Credentials \_\_\_\_\_

Social Security # **XXX-XX-**\_\_\_\_ (last 4 digits required)

Occupation \_\_\_\_\_

E-mail Address \_\_\_\_\_

Home Address \_\_\_\_\_

City \_\_\_\_\_ State \_\_\_\_\_ Zip \_\_\_\_\_

Home County \_\_\_\_\_

Home # \_\_\_\_\_ Work # \_\_\_\_\_

Employer \_\_\_\_\_

Department \_\_\_\_\_

Employer's Address \_\_\_\_\_

City \_\_\_\_\_ State \_\_\_\_\_ Zip \_\_\_\_\_

Work County \_\_\_\_\_

Program announcements will be sent to your email unless you opt out from receiving emails from MAHEC. We never share our mailing lists.

Please remove my name from the MAHEC mailing list.

Please provide a:

Vegetarian Option  Gluten-free Option

#### After Nov. 14th:

MD/DO:  \$189.00  \$204.00

NP/PA:  \$89.00  \$104.00

Allied Health and Non-Healthcare:  \$89.00  \$104.00

Residents/Medical Students:  Fee Waived

*Full payment must accompany all registrations unless a payment plan has been approved in advance. Registrations received without accompanying payment will not be processed.*

Check is enclosed (*Made payable to MAHEC*)  Credit card info provided  
 Visa  Mastercard  Discover Card  American Express  
Account # \_\_\_\_\_

Exp \_\_\_\_\_ / \_\_\_\_\_ Code on back of card \_\_\_\_\_

Name on Card \_\_\_\_\_

Signature \_\_\_\_\_

Send completed registration form to:

# 16ME015/47107

MAHEC Registration

121 Hendersonville Rd., Asheville, NC 28803

Fax to 828-257-4768

Have a question?



Special Services:  
828-257-4468

Registration Information:

828-257-4475

Fax Registration:

828-257-4768

Online Registration:

[www.mahec.net](http://www.mahec.net)

Email:

[registration@mahec.net](mailto:registration@mahec.net)

Mail: MAHEC Registration

121 Hendersonville Rd., Asheville, NC 28803