



LIVE
WEBINARS



INTIMATE PARTNER VIOLENCE FOR OUTPATIENT AND URGENT CARE PROVIDERS

TUESDAY, APRIL 12

Intimate Partner Violence
Foundations and
Screening

66718lm

TUESDAY, APRIL 19

Best Practices in
Intimate Partner
Response

67722lm

TUESDAY, APRIL 26

Creating a Culture of
Care for Survivors of
Intimate Partner Violence

67723lm

PROGRAM TIMES

ZOOM SIGN-IN – 12:25 pm • PROGRAM – 12:30 – 1:30 pm

Intimate partner violence (IPV) has only become more widely accepted as a healthcare issue within the last several years and is a prevalent health challenge. With limited time and resources, integrating IPV into primary care can be challenging for many healthcare providers. A crucial first step in IPV management in outpatient care is to increase knowledge and awareness of the health and safety impacts of IPV. Better identification, screening and management of IPV allows healthcare clinicians to provide optimal care and improve health outcomes for the survivor. Join us for three comprehensive webinars that will provide overall IPV education, screening tools, reporting requirements, and resources, with a focus on implementing these measures in a clinical setting.

Target Audience

Physicians, Advanced Practices Providers, Nurses, Social Workers, and other healthcare professionals who are committed to responding to patients who are experiencing intimate partner violence

REGISTER AT WWW.WAKEAHEC.ORG.



INTIMATE PARTNER VIOLENCE

FOR OUTPATIENT AND URGENT CARE PROVIDERS

Learning Objectives

At the conclusion of these competency-based activities, the participant should be able to:

Intimate Partner Violence Foundations and Screening

- Discuss the impact of IPV on patient health, children, including health disparities.
- Discuss the use of patient IPV education and screening tools.

Best Practices in Intimate Partner Response

- Examine appropriate ways to respond to disclosures of IPV, confidentiality and reporting requirements.
- Apply practice recommendations by integrating abuse into care and referring to external resources.

Creating a Culture of Care for Survivors of Intimate Partner Violence

- Identify barriers and solutions in providing care for survivors of intimate partner violence in the health care setting.
- Reflect on providers' attitudes regarding intimate partner violence and how these impact understanding of survivors' experience.
- Recognize skills necessary for providing essential clinical care for survivors of intimate partner violence.

Faculty

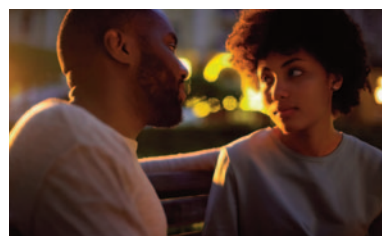
Christine Khandelwal, DO

Conference Course Director
Vice President of Education and Strategic Outreach
Transitions LifeCare
Professor, Dept of Family Medicine, Geriatrics
Campbell University School of Osteopathic Medicine



Melinda Manning, JD, MSW

Director, UNC Health Beacon Program
UNC Health



Cassandra Rowe, MPH

Co-Director of Survivor Wellbeing
NC Coalition Against Domestic Violence

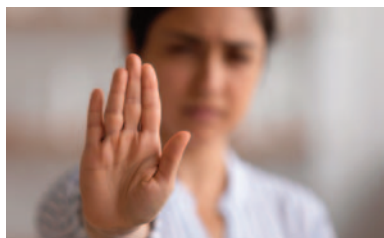


Jessica R. Williams, PhD, MPH, PHNA-BC, FAAN

Associate Professor, School of Nursing
University of North Carolina at Chapel Hill

INTIMATE PARTNER VIOLENCE

FOR OUTPATIENT AND URGENT CARE PROVIDERS



Credit

The Wake Area Health Education Center (Wake AHEC) designates this live activity for a maximum of 1.0 *AMA PRA Category 1 Credits™* per session. Physicians should claim only the credit commensurate with the extent of their participation in the activity.



Accreditation Statement: This activity has been planned and implemented in accordance with the accreditation requirements and policies of the North Carolina Medical Society (NCMS) through the joint providership of Wake AHEC and the North Carolina Medical Board. Wake AHEC is accredited by the NCMS to provide continuing medical education for physicians.

Additional Credit: ANCC and the North Carolina Board of Nursing accepts *AMA PRA Category 1 Credits™* from the organizations accredited by the Accreditation Council for Continuing Medical Education (ACCME).



Social Workers: NC AHEC is an approved provider of distance CE by the National Association of Social Workers – North Carolina Chapter (NASW-NC). This program has been approved for 1.0 contact hours.

Wake AHEC CEU: Wake AHEC will provide .1 CEU to participant upon completion of this activity.

A participant must attend 100% of the activity to receive credit. Partial CEU will not be awarded.

Contact Hours: Wake AHEC will provide up to 1.0 contact hour to participants.

Wake AHEC is part of the North Carolina AHEC Program.

Registration Fee

- No registration fee for the first 25 registrations per session.
- \$20 per session after the first 25 registrations.
- Reduced registration made possible through support of North Carolina Medical Board.
- Vouchers will be accepted.
- Registration will include online handouts and online certificate of completion.
- ZOOM webinar link will be provided to registrants approximately 2 days before the conference.
- Please connect to webinar five minutes prior to conference start time.

Cancellations and Refunds: No refunds will be issued. Substitutes are encouraged.

ADA Statement

Visit www.wakeahec.org for our ADA Statement.

Questions? Contact Lue McKnight at 919-350-0469 or lmcknight@wakeahec.org.

REGISTER AT WWW.WAKEAHEC.ORG.